



Woolly

Woolly væves af genbrugsuld. Det kan være tiloversblevet materiale fra konfektionsfremstilling eller andre uldprodukter der genanvendes. Hvert produceret kilo af ren ny uld genererer 9 kg kuldioxid. At procesere 1 kilo genanvendt uld genererer bare 0,5 kg kuldioxid. Positiv miljøpåvirkning takket være mindre vandforbrug, energi og lavere CO2-påvirkning.

Anvendelsesområde:

Dekoration, Kontraktmarkedet , Gardin/forhæng, Polstring, hjemmemiljø, Sengetæppe

Bredde:	150 cm ±2 cm	Sømskrid, islæt:	3,5 mm (ISO 13936-2)
Indhold:	70% Genanvendt uld, 25% Polyamid, 5% Andre fibre	Trækstyrke trend:	511 N
Vægt (g/m ²):	400	Trækstyrke islæt:	301,4 N
Rullelængde (m):	40	Rivstyrke, trend:	43 N
Typ:	Garnfarvet	Rivstyrke, islæt:	28,9 N
GRS certifikat:	CU1049784GRS-2023-00050154	Lydabsorbering:	Klass C, αw 0,70 (ISO 354)
Brandklasse:	BS 5852-1 Source 0 & 1, Cal TB 117, EN 1021-1 & 2, EN 13773	Dimentionsændring islæt:	- 1,14 %
Martindale:	150000 (ISO 12947-2)	Dimentionsændring trend:	- 0,67 %
Pilling:	4 (ISO 12945-2)	Farveægthed ved vand:	ISO 105-E16
Tørgnidning:	5 (ISO 105-X12)	Färgändring:	4-5
Vådgindning:	4-5 (ISO 105-X12)	Farveægthed mod sved:	ISO 105-E04
Lysægthed:	6 (ISO 105-B02)	Afsmidning, multifibre:	4
Sømskrid, trend:	2,8 mm (ISO 13936-2)	Farveændring:	4-5
		Farveægthed mod vand:	4-5 (ISO 105-E01)

Vores uldkollektioner Woolly, Woolly Wide, Margrethe og Lillehammer er fremstillet uden gennemgå en vandkrævende farvningsproces. Farverne er sorteret og mixet for at komme frem til den endelige farve. Derfor kan der forekomme afvigelse fra prøve til endeligt produkt, men altid inden for en acceptabel ramme. Det er en del af charmen ved kollektioner fremstillet af genbrugsmaterialer.





Wooly 2142 raspberry
1038801



Wooly 2019 marine
1038802



Wooly 1011 bottle
green
1038803



Wooly 1002 koks
1038804



Wooly 1008 brown
1038806



Wooly 1042 grafit
1038807



Wooly 1016 bone
1038810



Wooly 1044 cerise
1038811



Wooly 2079 green
1038813



Wooly 1037 sand
1038816



Wooly 1000 light grey
1038817



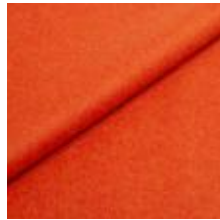
Wooly 2240 petrol
1038822



Wooly 1010 forest
1038823



Wooly 2151 beige
1038826



Wooly 2012 B terra
1038831



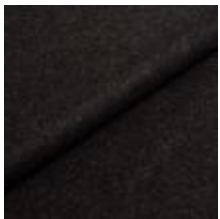
Wooly 1026 light
brown
1038836



Wooly 2011 tulip
1038841



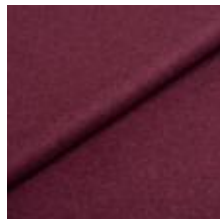
Wooly 1007 navy
1038842



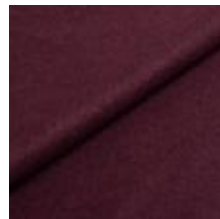
Wooly 1003 black
1038844



Wooly 1001 antracit
1038847



Wooly 2238
aubergine
1038861



Wooly 2014 plum
1038871



Wooly 2020 lilac
melange
1038881



Wooly 2255 dark lilac
1038891



Wooly 2270 Lime
1039001



Wooly 2252 Soft
green
1039002



Wooly 9759 Leaf
1039003



Wooly 2269 Emerald
1039004



Wooly 2256 Ivory
melange
1039005



Wooly 9202 Taupe
1039007



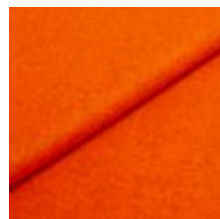
Wooly 1008 B Ebony
1039008



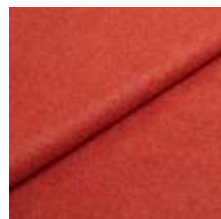
Wooly 2272 Dijon
1039009



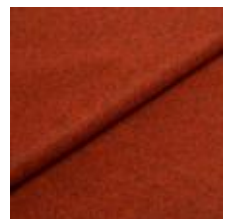
Wooly 9145 Pumpkin
1039010



Wooly 2278 Orange
melange
1039011



Wooly 2016 B Dark
terracotta
1039012



Wooly 1040 Brick
melange
1039013



Wooly 2153 Java
melange
1039014



Wooly 2011 B Red
1039015



Wooly 9872 Pink
1039016



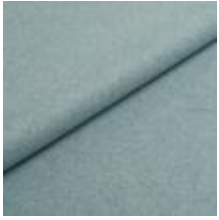
Wooly 0091 Berry
1039017



Wooly 0106 Turquoise
1039018



Wooly 2287 Opal
1039019



Wooly 9860 Soft blue
1039021



Wooly 2279 Ocean
1039022



Wooly 9233 Wine
1039023



Wooly 2288 Soda
1039024



Wooly 380037 Rust
1039025



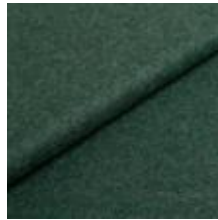
Wooly 2301 Marsala
1039026



Wooly 2302 Court
1039027



Wooly 840069
Juniper
1039028



Wooly 849139 Teal
1039029



Wooly 228881 Lapis
1039030



Wooly 22882287
Aquamarin
1039031



Wooly 842287
Lagoon
1039032

You control your data

We and our partners use technologies, including cookies, to collect information about you for various purposes, including:

- Necessary – makes the website usable.
- Statistics – help us understand how visitors interact with our website.
- Marketing – Used by advertisers to help us display relevant ads in other channels.

By clicking 'Accept All' you consent to all these purposes. You can also choose to indicate what purposes you will consent to using the custom selections and then click 'Accept selected'.

Decline All

Accept All

Necessary



Statistics



Marketing

